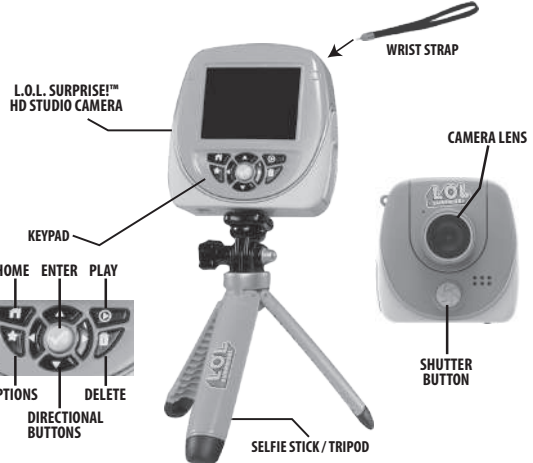


L.O.L. Surprise!™ HD Studio Camera

Show off for the camera! Use the HD Camera to take photos and selfies. Film fun videos with the green screen and add one of 40+ special effects. Make comic book pages and create stop motion videos. Change your voice and add sounds to videos. Play exciting games.



CONTENTS

- 1. 2.4" Color LCD Screen HD Camera
  - 2. Tripod/Selfie Stick
  - 3. Green Screen Fabric
  - 4. Wrist Strap
  - 5. Micro-USB Cable
- Only one L.O.L. Surprise!™ HD Studio Camera included. Multiple shown for reference only.

To turn on the device, press and hold the home button for about 3 seconds until the screen turns on and a sound plays.

Prior to giving this product to a child, remove all packaging material including plastic covers, tape, ties, tags and packaging locks. The plastic cover over the camera surface is packaging material included for protective purposes and should be removed prior to use.

SPECIFICATIONS

Supported Languages	English, Spanish, French, Dutch, German, Italian, Polish		
Connectivity	Wireless Connectivity: BLE connection L.O.L. Surprise!™ Smartwatch 2.0 Micro-USB Cable: 2.0 (Included for connecting to computer)		
Battery	Lithium Polymer battery (non-replaceable)		
Battery Life	Up to 2 hours		
Optimum Operating and Charging Temperature	14°F (-10°C) ~ 104°F (40°C)		
Screen Display	2.4" Color LCD		
Focus Range	1.5' – infinity		
Internal Memory	256MB (shared with system data, the actual memory for user will be less)		
MicroSD card (not included):	Up to 128GB, Class 10 or above is recommended		
File Format	Photo (JPEG), Video (MP4)		

Memory Storage

Storage	Resolution	Internal Memory	32 GB microSD Card (Not Included)
PHOTOS	2.0 MP	410	160,000
	5.0 MP	94	45,700
VIDEOS	720p	4 min 10 sec	1,060 min
	1080p	2 min	640 min

Resolution

	Pixels	Low Resolution	Mid Resolution	High Resolution
PHOTOS		1600 x 1200 (2.0 MP)	-	2560 x 1920 (5.0 MP)
VIDEOS		-	1280 x 720 (720p)	1920 x 1080 (1080p)

MICRO-USB

**NOTE:** An adult must charge the device and connect to a computer. Use the included **Micro-USB Cable** to connect the device to your computer to transfer photos and videos, charge the device and update the firmware.

1. Open the cover over the Micro-USB port on L.O.L. Surprise!™ HD Studio Camera.
2. Insert the Micro-USB side of the cable into the port.
3. Insert the large USB end into a USB port on your computer.

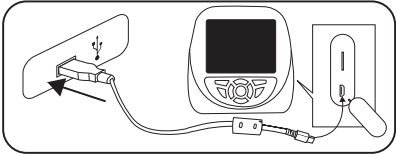
**NOTE:** The camera will not be accessible when the Micro-USB is plugged in.

BATTERY CHARGING

Prior to use, it is recommended that you fully charge L.O.L. Surprise!™ HD Studio Camera for optimal performance.

**NOTE:** The device should be OFF prior to charging. To power OFF, hold the home button for about 5 seconds, until a sound plays and the device shuts off.

1. Insert the larger end of the Micro-USB cable into a USB port on your computer.
2. Lift open the cover over the Micro-USB port on L.O.L. Surprise!™ HD Studio Camera and insert the Micro-USB cable into the port.
3. A battery symbol will turn green on the screen once the device is fully charged. Remove the device from the Micro-USB cable. Do not over charge the battery.
4. You can now turn on the device and begin playing.



Open the port cover on the side of L.O.L. Surprise!™ HD Studio Camera and plug the Micro-USB end of the cable into the port. Plug the charging cable into the USB port on your computer.

**NOTE:** See page 23 for more **BATTERY INFORMATION**.

SYSTEM REQUIREMENTS

Compatible systems include Microsoft® Windows XP, Windows® 7, Windows® 8, and Windows® 10 Operating System or a Macintosh Computer with macOS X version 10.13 and 10.14. Other operating systems may be compatible or eligible for upgrade to a compatible system. USB port required.

FIRMWARE UPDATE

**NOTE:** The device has to have a minimum of 20% battery power when updating the firmware. It is recommended to insert a microSD card (not included) with more than 50MB free space to begin the update.

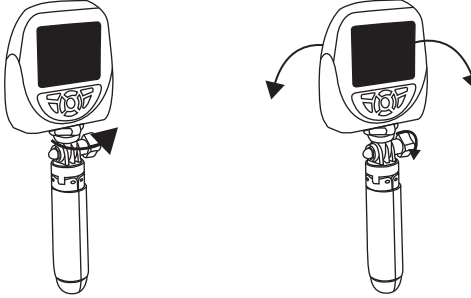
Before beginning, it is important to check for any available firmware updates so that the L.O.L. Surprise!™ HD Studio Camera is operating optimally. To update the firmware on your device:

1. On your computer, visit [WWW.MGAE.COM/LOLSURPRISE-CAMERA](http://WWW.MGAE.COM/LOLSURPRISE-CAMERA) and download the Firmware Installer.
2. Turn off the camera. To turn off the device, press and hold the home button on the front of the device for about 5 seconds until a sound plays and the screen turns off.
3. Follow the steps on page 4 to connect the Micro-USB Cable to the camera and your computer.
4. On the Firmware Installer, click on Firmware Update. A progress bar will appear on your computer's screen, or, if your watch is up-to-date, it will say "Firmware is up to date." If it is up-to-date, properly eject the device from your computer.
5. Once the progress bar on your computer shows it is complete, properly eject the device from your computer. Then, remove the Micro-USB Cable.
6. Turn on the camera. To turn on the device, press and hold the home button for about 5 seconds. A firmware update screen will be displayed on the device. Press the check mark and wait for the progress bar to finish loading to complete the firmware update.

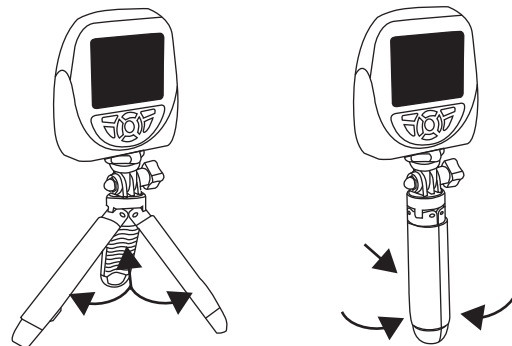
**NOTE:** After the camera cycles back on, it is recommended you turn the device off and back on again to confirm the update was successful.

USING THE SELFIE STICK/TRIPOD

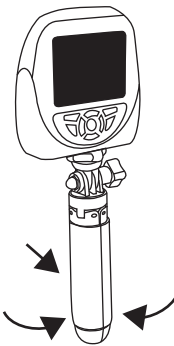
L.O.L. Surprise!™ HD Studio Camera can be used one of three ways: handheld device, selfie stick or as a tripod. Follow the instructions below to use with the selfie stick or tripod.



To attach the selfie stick/tripod, twist the screw on top of the stick into the bottom of the camera. Keep turning until it feels secure.



To convert the selfie stick into the tripod, pull the legs out.



To adjust the camera, loosen the knob and move the camera forward or backward. Turn the knob to tighten and secure.

Push them back in to revert back to the selfie stick.

MENU

Use the on-screen icons to select from a variety of special effects, features, and games.

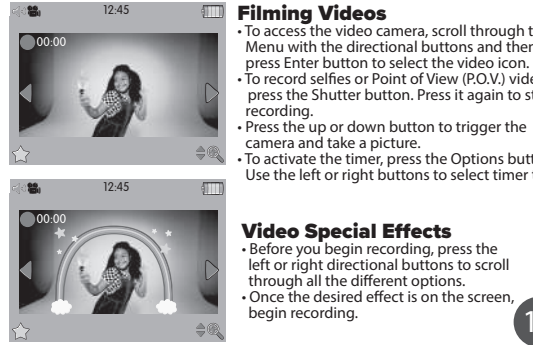
To exit and return to the Menu, press the home button.

There are 12 main menu screens. Press left or right buttons on the keypad to navigate between the menu screens. There are two menu pages and it will scroll through the top and bottom icons before moving on to the second menu screen.



VIDEO MENU

**REMEMBER:** For your security, the camera and microphone on your device will be disabled when connecting to a computer with the Micro-USB Cable, as the device must be off. Properly eject the device from your computer, unplug the Micro-USB cable, and turn the device on before using these features.



**Filming Videos**

- To access the video camera, scroll through the Menu with the directional buttons and then press Enter button to select the video icon.
- To record selfies or Point of View (P.O.V.) videos, press the Shutter button. Press it again to stop recording.
- Press the up or down button to trigger the camera and take a picture.
- To activate the timer, press the Options button. Use the left or right buttons to select timer time.

**Video Special Effects**

- Before you begin recording, press the left or right directional buttons to scroll through all the different options.
- Once the desired effect is on the screen, begin recording.

STOP MOTION MENU

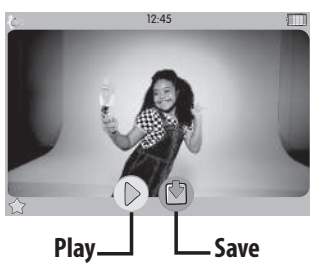


Creating Stop Motion Videos

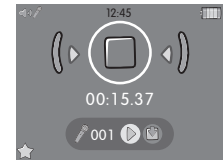
- To access the stop motion menu, scroll through the Menu with the directional buttons and then press Enter button to select the stop motion icon.
- Capture frames by pressing the Shutter button.
- Each frame will appear at the bottom of the screen. To erase any of the frames, use the directional buttons and press the Delete button. Then, press the check mark to complete the action.

Play/Save Stop Motion

- To play stop motion video, press the Options button. Then move the directional buttons to the play icon and press the Enter button to select it.
- To save the video, press the Options button. Then move the directional buttons to the save icon and press the Enter button to select it.



AUDIO RECORD MENU



**Recording Audio**

- Press the Shutter button to begin recording. Press it again to stop recording.
- To delete the audio, press the Delete button and then the check mark to confirm the action.

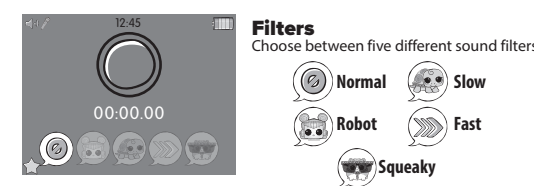
**Play/Save Audio:**

- To play audio, move the directional buttons to the play icon and press the Enter button to select it.
- To save audio, move the directional buttons to the save icon and press the Enter button to select it.

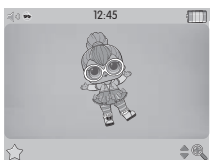
Adding Audio Filters

After recording an audio file, choose a filter to change how it sounds.

- Press the Options button. The filters will appear on the bottom of the screen.
- Use the directional buttons and press the Enter button to select it.



STICKERS MENU

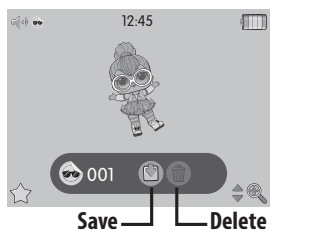


Creating Stickers

- Create unique stickers with objects around your room!
- To access the stickers, scroll through the Menu with the directional buttons and then press Enter button to select the sticker icon.
- Set up the included green screen fabric behind an object.
- When prompted to use the green screen background, press the Shutter button.
- Press the Shutter button to take the picture.
- Press the up or down button to zoom in and out on the screen.
- To activate the timer, press the Options button. Use the left or right buttons to select timer time.

Save/Delete Stickers

- To save stickers, press the Options button. Then move the directional buttons to the save icon and press Enter to select it.
- To delete the sticker, press the Options button. Then move the directional buttons to the delete icon and press the Enter button to select it.

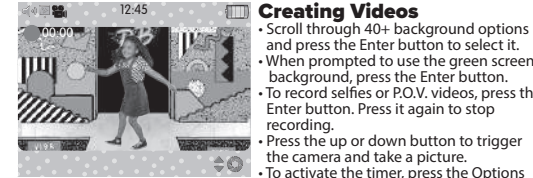


GREEN SCREEN MENU

Create videos or take pictures with the green screen! To access the green screen, scroll through the Menu with the directional buttons and press the Enter button to select the green screen icon. Then, scroll between the video or camera icons with the directional buttons and press the Enter button to select it.

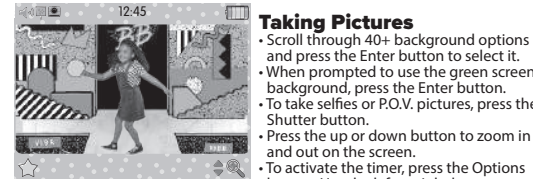


When filming videos or taking pictures with the green screen, extend the green screen fabric and stand in front of it.



Creating Videos

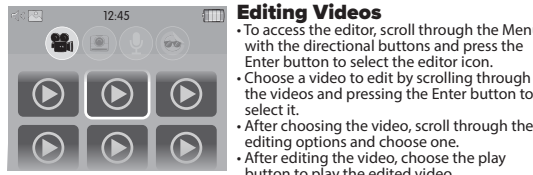
- Scroll through 40+ background options and press the Enter button to select it.
- When prompted to use the green screen background, press the Enter button.
- To record selfies or P.O.V. videos, press the Enter button. Press it again to stop recording.
- Press the up or down button to trigger the camera and take a picture.
- To activate the timer, press the Options button. Use the left or right buttons to select timer time.



Taking Pictures

- Scroll through 40+ background options and press the Enter button to select it.
- When prompted to use the green screen background, press the Enter button.
- To take selfies or P.O.V. pictures, press the Shutter button.
- Press the up or down button to zoom in and out on the screen.
- To activate the timer, press the Options button. Use the left or right buttons to select timer time.

EDITOR MENU



Editing Videos

- To access the editor, scroll through the Menu with the directional buttons and press the Enter button to select the editor icon.
- Choose a video to edit by scrolling through the videos and pressing the Enter button to select it.
- After choosing the video, scroll through the editing options and choose one.
- After editing the video, choose the play button to play the edited video.
- Choose the save icon to save the edited video.

**TRIM VIDEO:**

- Press the Play button and start the video.
- Move the left or right buttons to move through the frames that you want to trim.
- Press the Enter button to trim.

**ADD SOUND EFFECTS:**

- Add movie opening music, background music or your own recorded audio.
- Select one of the three sound icons.
- Scroll through the different sound options and select the desired sound.

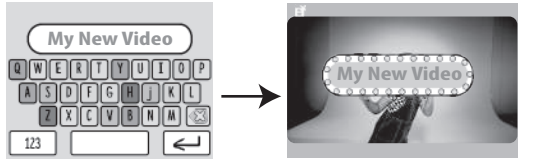
**Movie Openings:** The movie opening audio will start at the beginning of the video. It will stop as soon as the first frame ends.

**Background Music:** The music will continue in a loop until the video ends.

**Recorded Audio:** The audio will play until it is over or the video ends.

**ADD TITLE:**

- When the keyboard appears, press the directional and Enter button to type a title.
- Press the "enter" to save the title.
- The title will appear at the beginning of the video.



2

4

6

8

10

12

14

3

5

7

9

11

13

1

3

5

7

9

11



## GAMES MENU

All games have three level options, where 1 is the easiest and 3 is the hardest level.



### Pair It Up! :

- Match the images before the time runs out.
- Use the Directional buttons to scroll through the cards.
- Flip the card over by pressing the Enter button.
- If they match, you will earn a point.
- If they don't match, they will flip back over and you will have to try again.



### Glamour Puzzle:

- The device will choose one of three L.O.L. Surprise!™ scenes.
- Press the Directional buttons to scroll through the tiles.
  - To move a tile, press the Enter button. The tile can only move into the empty square.
  - Continue to move the tiles until the picture is complete. The empty square should be on the lower right corner if all the pieces are in order.
  - To win, make sure the photo is complete before the time runs out.
  - There are three levels. After completing 3 rounds, the game will move to the next level. Each level will have shorter time.

16

## COMICS MENU



### Create Comic Books

- To access the comic book layouts, scroll through the Menu with the directional buttons and press the Enter button to select the comics icon.
- Scroll and choose from the layout options.
- After choosing the layout, choose a panel and then choose a picture to place in that panel.
- Add speech bubbles and graphics to the images.
- Choose the save icon to save the comic book.

#### LAYOUT OPTIONS:



#### ADD SPEECH BUBBLES:

- Use the directional buttons to choose a speech bubble.
- Press the Enter button to select the speech bubble.
- The speech bubble will appear in the photo panel.
- Move the speech bubble to the desired location with the directional buttons. Then, press the check mark to place.



#### ADD GRAPHICS

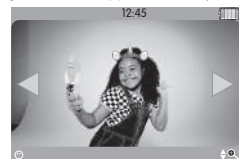
- Use the directional buttons to choose a graphic.
- Press the Enter button to select the graphic.
- The graphic will appear in the photo panel.
- Move the graphic to the desired location with the directional buttons. Then, press the check mark to place.



17

## MASK MODE MENU

The masks will track the person's face on the screen and move with the person. Depending on the mask, it will appear on a certain part of your face. For example, if you choose a hat mask, it will appear on the head of the person. If you choose glasses, it will appear on the eyes of the person.



### Masks Effect

- To access the Mask Mode menu, scroll through the menu with the directional buttons and then press Enter button to select the mask mode icon.
- Before you take a picture, press the left or right directional buttons to scroll through all the different options.
- Press the Shutter button to take the picture.
- To zoom in or out, press the up or down buttons.
- To activate the timer, press the Options button.
- Use the left or right buttons to select timer time.

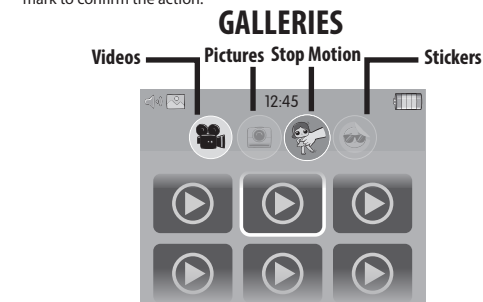
#### IMPORTANT NOTES:

- Face recognition will vary depending on the environment. Make sure to stand 3'-4" (1m) in front of the camera and the camera can clearly see the face.
- Make sure the face is always in a front face position.
- The camera will only be able to detect 3 faces.

## GALLERY MENU

All videos, pictures, recorded audio and stickers created with the camera will be saved to the gallery. To access the Gallery Menu, scroll through the menu with the directional buttons and then press the Enter button to select the gallery icon.

- While in the video gallery, use the directional button and Enter button to select and view the videos.
- Use the home button to return to the gallery's main page and scroll left or right to view the saved items in the camera, recorded audio and sticker galleries.
- To erase anything in the gallery, press the Delete button and then the check mark to confirm the action.



18

## SETTINGS MENU

Brightness, Volume, Date, Time



### Brightness Setting

Use the up and down buttons to change the brightness of the screen. Use the right button to move to the volume.

### Volume Setting

Use the up and down buttons to change the device's volume level. Use the left button to move to the brightness.



### Date Selection/Date Format:

To change the date, use the left or right buttons cycle through the month, day, year. There will be arrows above and below the selected sections.

- Use the up or down button to change the numbers.
- To change the date format, use the left button until the arrows are over the date format section.
- Use the up or down button to change the date format.
- Press the Home button to set it. After pressing the Home button, it will return to the Settings Menu.



### Time Selection:

- Use the left or right buttons to cycle through the hour, minutes and AM/PM. Arrows above and below will appear in the selected sections.
- Use the up or down button to set the time.
- Use the left or right buttons to select the time display. Then use the up and down to choose between 12 or 24 hour cycle.
- Press the Enter button to set it. After pressing the Enter button, it will return to the Settings Menu.

**NOTE: L.O.L. Surprise!™ HD Studio Camera will not automatically change for Daylight Savings Time.**

19

## SETTINGS MENU CONTINUED

Resolution, Remote Control, Memory, Firmware Version, Language



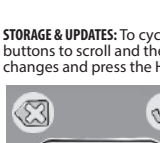
### Resolution

### Camera Setting

Use the up and down buttons to change the resolution of the camera. Use the right button to move to the video's setting.

### Video Setting

Use the up and down buttons to change the resolution of the video. Use the left button to move to the camera's setting.



### STORAGE & UPDATES:

To cycle through each setting, use the directional buttons to scroll and the Enter button to select it. Make the appropriate changes and press the Home button to return to the sub-menu.

### L.O.L. Surprise!™ Smartwatch 2.0

- Control the camera using a L.O.L. Surprise!™ Smartwatch 2.0 (sold separately).
- When prompted on the smartwatch, connect it to the camera.
- Use the smartwatch as a remote control to control the camera.
- Camera will only work with L.O.L. Surprise!™ Smartwatch 2.0.



### Memory/Factory Reset

- The top bar will show the device's memory space.
- To reset the device to the factory settings, press the down button and then the Enter button. Press the X or check mark to confirm the action.

**NOTE: Resetting will delete anything saved on the device.**



### Firmware Version:

- Check that L.O.L. Surprise!™ HD Studio Camera is up-to-date with the latest available firmware.
- The screen will show you which version you have.
- See page 6 for more information on Firmware updates.

**NOTE: You will also see this screen on your first start up after updating the firmware.**



### Language Selection:

- Use the up and down buttons to change the language.
- English · Spanish · French · Dutch · German · Italian · Polish

**NOTE: L.O.L. Surprise!™ HD Studio Camera does not speak any language.**

20

## WARNING

This toy produces flashes that may trigger epilepsies in sensitized individuals. A very small percentage of people, due to an existing condition, may experience epileptic seizures or momentary loss of consciousness when viewing certain light patterns or flashing lights. While this product does not contribute any additional risks, it is recommended that parental supervision is enforced during play. If you experience any dizziness or altered vision, disorientation or convulsions, IMMEDIATELY discontinue use and consult a physician. Focus on screens in close proximity for an extended amount of time may cause fatigue or discomfort. For every one hour of play, take a 15 minute break, or take breaks more frequently as needed.

## CARE AND MAINTENANCE

- Always keep the port cover closed during use to prevent water or debris from entering the device. Only open the port cover to connect the device to your computer.
- Keep the device clean by wiping it off with a slightly damp cloth and drying it thoroughly. Do not place the device under running water or use harsh chemicals or abrasive materials to clean.
- Wipe the accessories with a damp cloth regularly to keep them clean. Always air dry; do not subject to heat.
- Keep the device and accessories out of direct sunlight for long periods of time. Do not expose the device or accessories to direct heat sources.
- Do not drop the device on a hard surface to prevent damage.
- Keep the camera lens clean. If pictures are blurry, it could be because dust or dirt is covering the camera lens. Wipe clean with a dry, soft cloth and/or blow gently on the lens to remove any debris.
- If you do not plan to use the device for an extended period, it is recommended that you turn the device off. Regularly charge the battery when not in use to ensure the battery accepts a charge. See **BATTERY LIFE AND MAINTENANCE** on page 23.

## SPLASHPROOF

While your device can withstand splashes from washing your hands or dancing in the rain, it is not recommended to submerge the device in water.

To prevent water damage:

- Always ensure the cover over the Micro-USB port is completely closed to prevent water from getting inside the camera.
- Do not place the device under running water.
- Do not submerge in water or use while swimming.

## RESTARTING CAMERA

To restart the camera, move the switch under the device to the OFF position and then back to the ON position.

22

## BATTERY DISPOSAL



"Let's care for the environment!"

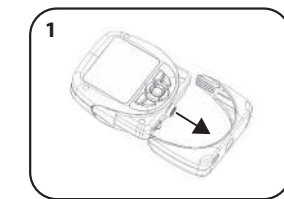
The wheelle bin symbol indicates that the product must not be disposed of with other household waste. Please use designated collection points or recycling facilities when disposing of the item. Do not treat old batteries as household waste. Take them to a designated recycling facility.

## BATTERY REMOVAL INSTRUCTIONS

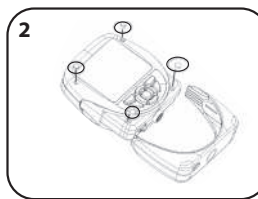
This camera contains a battery that is non-replaceable. Do not attempt to open the device unless you are permanently disposing the device. Opening the device for any other reason could void the warranty. Battery removal is permanent, and the device will no longer work after removing the battery.

### CAUTION:

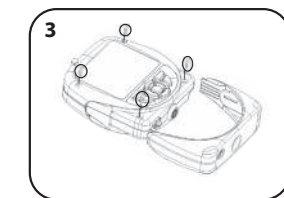
An ADULT must remove the battery for proper disposal. Always wear protective safety goggles in case of battery leakage.



Remove the bottom case.



Remove the screws' plugs.



Use a small Phillip's screwdriver (not included) to remove the four screws on the front of the camera.

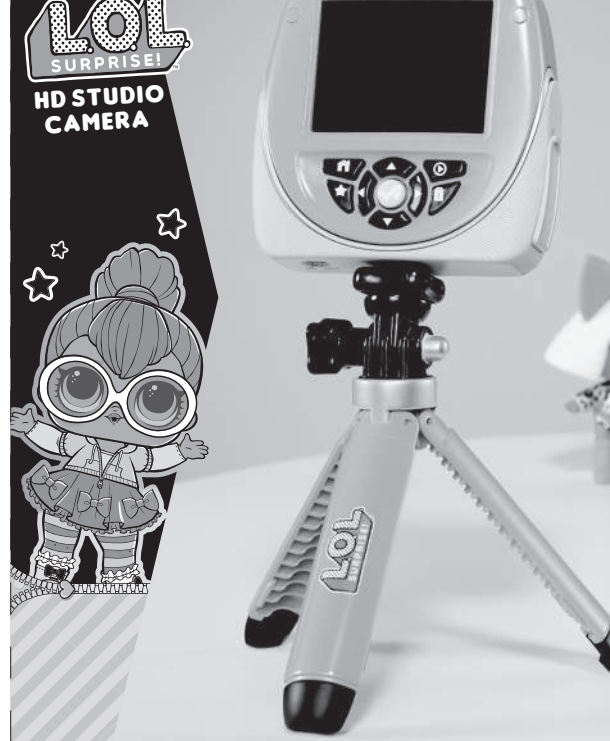


Use scissors to carefully cut the black and red wires **ONE AT A TIME**. Cover the wires/terminals with electrical tape and properly dispose of the battery.

24

For more information including the latest instructions, visit:  
[WWW.MGAE.COM/LOLSURPRISE-CAMERA](http://WWW.MGAE.COM/LOLSURPRISE-CAMERA)

## USER GUIDE



Illustrations are for reference only. Styles may vary from actual contents.

577256, 577256EUC

6+

26

## TROUBLESHOOTING

The camera has stopped working.	1. Turn the power OFF by pressing and holding the home button until the device turns off. 2. Turn the device back ON by pressing and holding the home button until the device turns on. <b>NOTE:</b> If the device still does not work, charge the battery (see page 4) and follow the steps above.
The image or video taken is not clear.	1. Ensure the lighting in the area you are shooting is sufficient. 2. Check that the camera lens is clean. If dirty, wipe with a dry, soft cloth and blow on it to remove debris. See <b>CARE AND MAINTENANCE</b> on page 22.
Cannot connect the device to a computer.	1. Ensure there is a good connection between the device and the computer via the Micro-USB Cable. See MICRO-USB PORT on page 4 and other supporting sections for more information. 2. If the cable is damaged, contact consumer service. Do not attempt to use the cable if it is damaged.
Wireless connectivity is not working properly.	1. Stay within close proximity (about 50 ft./15m with nothing in the way) of a L.O.L. Surprise!™ Smartwatch 2.0 if connecting to a smartwatch. 2. The device must have a sufficient amount of battery power to connect wirelessly. Recharge the device using the included Micro-USB cable.
The device is not charging.	1. Only use the included Micro-USB cable to charge the device. 2. It is recommended you only charge the device using a USB port on your computer. 3. Make sure to charge the device regularly, even if it is not in use. A battery that has not been charged in a long time may no longer accept a charge.
Camera not turning on.	1. Press and hold the home button for three seconds. 2. Move the switch under the device to the OFF position and then back to the ON position. 3. Make sure it is fully charged.
Camera is frozen.	Move the switch under the device to the OFF position and then back to the ON position.

21

## LiPo BATTERY SAFE USAGE

This device is equipped with a Lithium Polymer (LiPo) rechargeable battery. Please pay attention to the following cautions for safety use:

- Before recharging, allow the battery to cool for at least 10 minutes after use.
- Do not dispose of the battery in fire or extreme heat.
- Do not use or leave the battery near a heat source such as a fire or a heater.
- Do not strike or throw the battery against hard surfaces.
- Do not immerse the battery in water.
- Keep the battery in a cool, dry place.
- When recharging, only use the Micro-USB Cable specifically included for that purpose.
- Do not over-charge the battery.
- Do not directly solder the battery and pierce the battery with a nail or other sharp object.
- Do not disassemble or alter the battery.
- Charge the battery as necessary. Failure to charge the battery frequently may result in a battery that will no longer accept a charge.
- Do not transport or store the battery with metal objects such as necklaces, hairpins, etc.
- Please recycle a used battery after covering the battery wires/terminals with electrical tape or by inserting it into an individual poly bag. Check local laws and regulations for recycling and/or disposal information.
- Under the environment with electrostatic discharge, the product may malfunction and require the user to reset the product by turning it off and back on again.
- Rechargeable batteries are only to be charged by an adult.

## BATTERY LIFE AND MAINTENANCE

Check the battery charge level on the quick menu view. If the battery is yellow, it's time to charge soon. If the battery is red, charge the battery as soon as possible.

Charge the battery regularly to maintain optimum performance, even when the device isn't regularly in use. For example, charge the device at least once every six months. Turn the device OFF before charging the battery. Keep the device OFF when the device will not be in use for an extended period.

23

## FCC COMPLIANCE

**NOTE:** This equipment has been tested and found to comply with the limits for a Class B digital device, pursuant to Part 15 of the FCC Rules. These limits are designed to provide reasonable protection against harmful interference in a residential installation. This equipment generates, uses and can radiate radio frequency energy and, if not installed and used in accordance with the instructions, may cause harmful interference to radio communications. However, there is no guarantee that interference will not occur in a particular installation. If this equipment does cause harmful interference to radio or television reception, which can be determined by turning the equipment off and on, the user is encouraged to try to correct the interference by one or more of the following measures:

- Reorient or relocate the receiving antenna.
  - Increase the separation between the equipment and receiver.
  - Connect the equipment into an outlet on a circuit different from that to which the receiver is connected.
  - Consult the dealer or an experienced radio/TV technician for help.
- This device complies with Part 15 of the FCC Rules. Operation is subject to the following two conditions: (1) This device may not cause harmful interference, and (2) this device must accept any interference received, including interference that may cause undesired operation.

**Caution:** Modifications not authorized by the manufacturer may void users authority to operate this device. This device contains licence-exempt transmitter(s)/receiver(s) that comply with Innovation, Science and Economic Development Canada's licence-exempt RSS(s). Operation is subject to the following two conditions: (1) This device may not cause interference. (2) This device must accept any interference, including interference that may cause undesired operation of the device. CAN ICES-3 (B)/NMB-3(B).

Frequency band: 2402-2480MHz  
Max. transmit power: -0.46 dBm

25

## DATED SALES RECEIPT REQUIRED FOR PROOF OF PURCHASE

Please keep this manual as it contains important information.



© 2021 MGA Entertainment, Inc.  
L.O.L. Surprise!™ is a trademark of MGA in the U.S. and other countries. All logos, names, characters, likenesses, images, slogans, and packaging appearance are the property of MGA.

Microsoft® and Windows logos are trademarks of Microsoft Corporation in the United States and other countries.  
Macintosh and Mac logos are trademarks of Apple Inc. in the United States and other countries. All other trademarks are the property of their respective owners.

**MGA Entertainment, Inc.**  
9220 Wimetka Ave, Chatsworth,  
CA 91311, U.S.A.  
800-222-4685

**MGA Entertainment UK Ltd.**  
50 Presley Way, Crownhill,  
Milton Keynes,  
MK8 0ES, Bucks, UK  
0800 521 558

**MGA Entertainment (Netherlands) B.V.**  
Baronie 68-70, 2404XG  
Alphen a/d Rijn, The Netherlands  
Tel: +31 (0) 172 758038

**Imported by MGA Entertainment Australia Pty Ltd.**  
Suite 2.02, 32 Delhi Road  
Macquarie Park  
NSW 2113  
1300 059 676

27